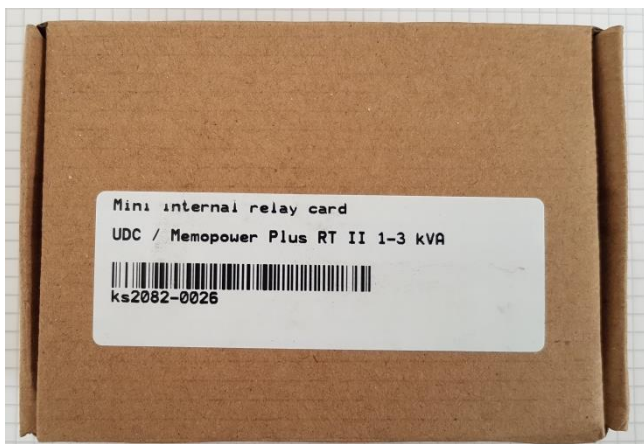
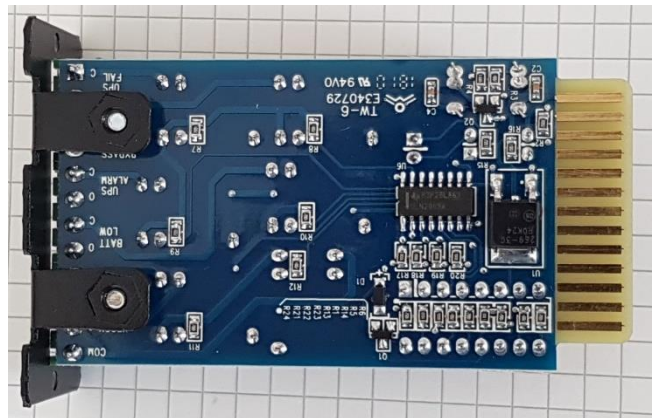
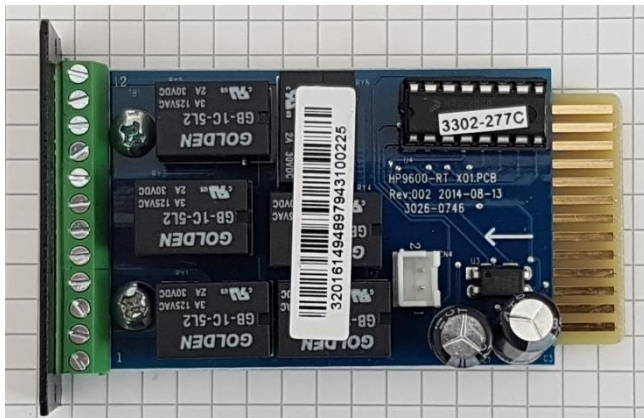


Dry Contact Card

Mini dry contact card is used for providing the interface for UPS peripheral monitoring. The contact signals can reflect UPS running status. The card is connected to peripheral monitoring devices via terminal board to facilitate the effective monitoring of the real-time status of UPS and timely feedback the status to monitor when abnormal situation occurs (such as UPS failure, mains interruption, UPS bypass and etc.). It is installed in the intelligent slot of the UPS.



Art.No. CPDRM



Uninterruptible power supply by:

Control Engineering e.U.

4240 Waldburg 45

+43 (0)7942 20038

www.control-engineering.at

service@control-engineering.at

The relay card includes 6 output ports and one input port. Please refer to the following table for detail.

Pins definition of connecting terminal on the board

| Terminal No. | Terminal function | Terminal No. | Terminal function |
|--------------|-------------------|--------------|-------------------|
| 1 | Common source | 9 | Bypass active NO |
| 2 | UPS on NO | 10 | Bypass active NC |
| 3 | AC fail NO | 11 | UPS fail NO |
| 4 | AC fail NC | 12 | UPS fail NC |
| 5 | Batt low NO | CN4-1 | Remote shutdown |
| 6 | Batt low NC | CN4-2 | GND |
| 7 | UPS alarm NO | | |
| 8 | UPS alarm NC | | |

Uninterruptible power supply by:

Control Engineering e.U.

4240 Waldburg 45

+43 (0)7942 20038

www.control-engineering.at

service@control-engineering.at

May 2019

© Control Engineering e.U.